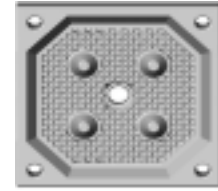


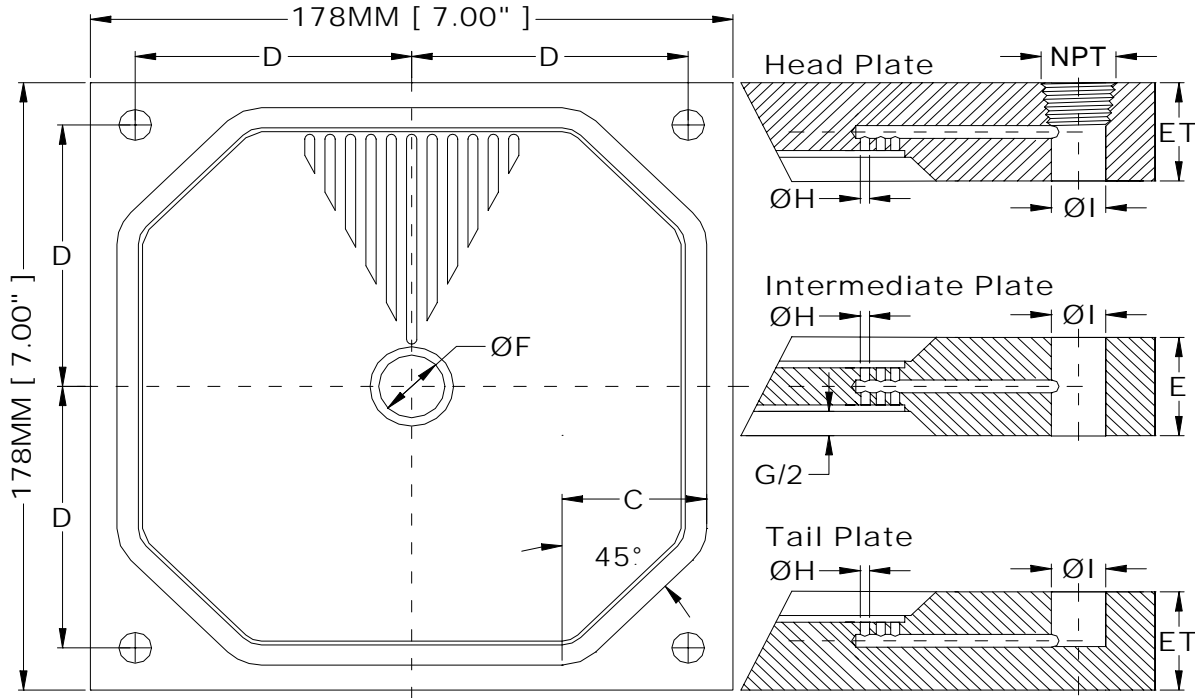


# AFILTRATION.COM, INC.

Manufacturing Plastics Mold Specialist Filter Elements Division.  
 2001 Zapata Street \* Freeport, Texas 77541-3321  
 TEL: (979) 239-1700 \* FAX: (979) 239-1727  
 www.afiltration.com \* E-mail: sales@afiltration.com



## (NG) None Gasket Plate Chamber Filter Element K0178-NG-16-S0



Polypropylene molded chamber filter element with piped filtration area, Pip height 4 mm, pip diameter 8 mm, Approx. 68 % open filtration area, Operating pressure 16 bar, Various materials: please see type key Main Dimensions acc.

Aluminum 6061-T6 machine to chamber filter element with ribs filtration area, Ribs height 4 mm, Approx. 68 % open filtration area, Operating pressure 16 bar, Various materials: please see type key Main Dimensions acc.

V= Volume Area (Cu.Ft)

M= Plate Weight

A= Filtration Area (SQ.Ft)

### Dimensions MM

Filter Cake	Support Bossed	Corner Pad	Discharge Holes	Thickness Plate		Feed Hole	Head Plate	Down Porting	Discharge Dia	Plate Weight	Filter Area	Volume Area
G/2	B	C	D	E	ET	F	NPT	H	I	M	A	V
mm	mm	mm	mm	mm	mm	mm	In	mm	mm	Kg	Ft <sup>2</sup>	Ft <sup>3</sup>
15		56.5	69.85	35	35	38.1	0.50	6.35	19.05	1.8	0.258	0.005
20		51.5	69.85	40	40	38.1	0.50	6.35	19.05	2.0	0.280	0.007
25		46.5	69.85	45	45	38.1	0.50	6.35	19.05	2.3	0.301	0.010
30		41.5	69.85	50	50	38.1	0.50	6.35	19.05	2.4	0.323	0.011
32		39.5	69.85	52	52	38.1	0.50	6.35	19.05	2.5	0.323	0.012
38		33.5	69.85	57	57	38.1	0.50	6.35	19.05	2.7	0.344	0.015

### Dimensions Inch

Filter Cake	Support Bossed	Corner Pad	Discharge Holes	Thickness Plate		Feed Hole	Head Plate	Down Porting	Discharge Dia	Plate Weight	Filter Area	Volume Area
G/2	B	C	D	E	ET	F	NPT	H	I	M	A	V
Inch	Inch	Inch	Inch	Inch	Inch	Inch	Inch	Inch	Inch	lbs	Ft <sup>2</sup>	Ft <sup>3</sup>
5/8"		2.224	2.750	1.378	1.378	1.500	0.50	0.250	0.75	4.0	0.258	0.005
3/4"		2.028	2.750	1.575	1.575	1.500	0.50	0.250	0.75	4.5	0.280	0.007
1"		1.831	2.750	1.772	1.772	1.500	0.50	0.250	0.75	5.0	0.301	0.010
1 3/16"		1.634	2.750	1.969	1.969	1.500	0.50	0.250	0.75	5.4	0.323	0.011
1 1/4"		1.555	2.750	2.047	2.047	1.500	0.50	0.250	0.75	5.5	0.323	0.012
1 1/2"		1.319	2.750	2.244	2.244	1.500	0.50	0.250	0.75	6.0	0.344	0.015