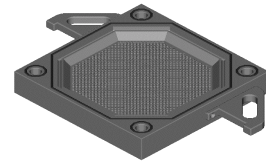




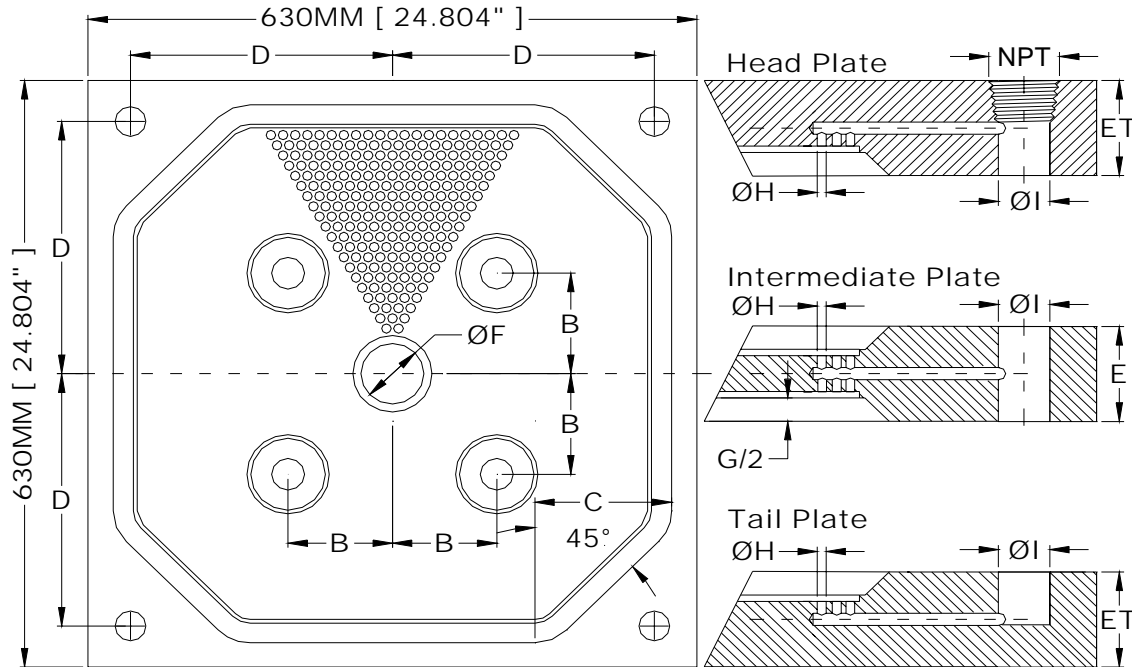
AFILTRATION.COM, INC.

Manufacturing Plastics Mold Specialist Filter Elements Division.
 2001 Zapata Street * Freeport, Texas 77541-3321
 TEL: (979) 239-1700 * FAX: (979) 239-1727
 www.afiltration.com * E-mail: sales@afiltration.com



None Gasket Plate Chamber Filter Element

K0630-NG-16-S4



Polypropylene molded chamber filter element with pipped filtration area, Pip height 4 mm, pip diameter 8 mm, Approx. 68 % open filtration area, Operating pressure 16 bar, Various materials: please see type key Main Dimensions acc.

Aluminum 6061-T6 machine to chamber filter element with ribs filtration area, Ribs height 4 mm, Approx. 68 % open filtration area, Operating pressure 16 bar, Various materials: please see type key Main Dimensions acc.

V= Volume Area (Cu.Ft)

M= Plate Weight

A= Filtration Area (SQ.Ft)

Dimensions MM

Filter Cake	Support Bossed	Corner Pad	Discharge Holes	Thickness Plate		Feed Hole	Head Plate	Down Porting	Discharge Dia	Plate Weight	Filter Area	Volume Area
G/2	B	C	D	E	ET	F	NPT	H	I	M	A	V
mm	mm	mm	mm	mm	mm	mm	In	mm	mm	Kg	Ft ²	Ft ³
15	108.0	133.0	254-271	40	49	38-101	1.00-2.00	8.0	25-51	9.1	5.845	0.137
20	108.0	128.0	254-271	45	52	38-101	1.00-2.00	8.0	25-51	10.0	5.899	0.183
25	108.0	123.0	254-271	50	54	38-101	1.00-2.00	8.0	25-51	10.9	5.952	0.227
30	108.0	118.0	254-271	55	56	38-101	1.00-2.00	8.0	25-51	11.8	6.006	0.271
32	108.0	116.0	254-271	57	57	38-101	1.00-2.00	8.0	25-51	12.2	6.028	0.288
38	108.0	110.0	254-271	63	60	38-101	1.00-2.00	8.0	25-51	13.6	6.082	0.341

Dimensions Inch

Filter Cake	Support Bossed	Corner Pad	Discharge Holes	Thickness Plate		Feed Hole	Head Plate	Down Porting	Discharge Dia	Plate Weight	Filter Area	Volume Area
G/2	B	C	D	E	ET	F	NPT	H	I	M	A	V
Inch	Inch	Inch	Inch	Inch	Inch	Inch	Inch	Inch	Inch	lbs	Ft ²	Ft ³
5/8"	4.252	5.236	10.00-10.669	1.575	1.929	1.50 - 4.00	1.00-2.00	0.315	1.00-2.00	20.0	5.845	0.137
3/4"	4.252	5.039	10.00-10.669	1.772	2.028	1.50 - 4.00	1.00-2.00	0.315	1.00-2.00	22.0	5.899	0.183
1"	4.252	4.843	10.00-10.669	1.969	2.106	1.50 - 4.00	1.00-2.00	0.315	1.00-2.00	24.0	5.952	0.227
1 3/16"	4.252	4.646	10.00-10.669	2.165	2.205	1.50 - 4.00	1.00-2.00	0.315	1.00-2.00	26.0	6.006	0.271
1 1/4"	4.252	4.567	10.00-10.669	2.244	2.244	1.50 - 4.00	1.00-2.00	0.315	1.00-2.00	27.0	6.028	0.288
1 1/2"	4.252	4.331	10.00-10.669	2.480	2.362	1.50 - 4.00	1.00-2.00	0.315	1.00-2.00	30.0	6.082	0.341